

## SINGLE PHASE ELECTRIC MOTORS



**“CG”**

Crompton Greaves motors have been distributed in Australia by Royce Cross Agencies for 25 years.

The Company's operations involve manufacturing; FHP (fractional HorsePower) Motors for domestic, commercial, agricultural and industrial applications have been manufactured since 1937 and today claim a premier market position.

The state-of-the-art manufacturing and test facilities, comparable to the best in the world, are certified to ISO 9001 standards by BVOI of England and are approved under the Category Certification Programme of CSA, Canada. FHP motors carry the CSA-NRTUC Mark for Canada and the USA. The motors have been tested to comply with the European Union's Electro Magnetic Compatibility Directive and the Low Voltage Directive; and the CE mark, as legally required in Europe.

The design and construction of this range of motors is essentially that of the basic induction motor, but with refinements introduced to meet specific market requirements. Due to the need to be lightweight for applications mainly in domestic/light industrial equipment, they are of rolled steel shell construction, with die-cast aluminium endshields. This form of construction also lends itself to economic production in the large numbers, required for these types of motor.

### STANDARDS

These motors conform to 85 5000 Part II for performance. Dimensionally, motors in Frame 56 conform to BS 2048 Part I, while Frame 100S conforms to IEC.

### RATING

All standard motors are continuously rated to comply with performance standards.

### ENCLOSURES

The various types of enclosures are as follows:

- Drip Proof (DP) to 1P23
- Totally Enclosed Fan Cooled (TEFC) to 1P44

### CONSTRUCTION

- Rolled steel shell with die cast aluminium end shields.
- Polypropylene fan with steel fan cowl.
- Pressed metal base.
- Die cast aluminium terminal box and fabricated baker light terminal block.

### BEARINGS

All motors are with ball bearings employs double shielded I sealed bearings greased for life. The bearing housings are fine bored to precision dimensions on precision boring machines. The shafts have excellent surface finish closely ground on the most advanced grinding machines. This ensures close tolerances and a high degree of concentricity leading to correct bearing fits for extended bearing life.

### TERMINAL ARRANGEMENT

Terminals are housed in Terminal Boxes suitable for conduit or for open wiring, if preferred. Motor cables are colour coded to BS standards and terminals are marked for identification and reconnection. A terminal diagram is attached to each motor for convenience.

### ROTATION

The single phase, FHP motors are supplied, as standard, connected for clockwise rotation viewed from the driving end, unless specified otherwise. Reversal of the starting winding leads at the motor terminal board will reverse rotation of all types.

### CAPACITORS

These are electrolytic short-time rated capacitors used on capacitor - start models, usually mounted on the motor frame. Special consideration is required if there are extremes in ambient temperature.

Electrolytic capacitors will not deteriorate long periods without operation. Hence they normally should be reactivated by switching the motor on and off.

### OVERLOAD THERMATRIPS

All models come with manual reset overload protection as standard.

### RELIABILITY

Each component goes through rigorous quality control at every stage of manufacture. With well-equipped material testing laboratories to back up the modern manufacturing process, the final product is a highly reliable motor. In spite of this, each and every motor is

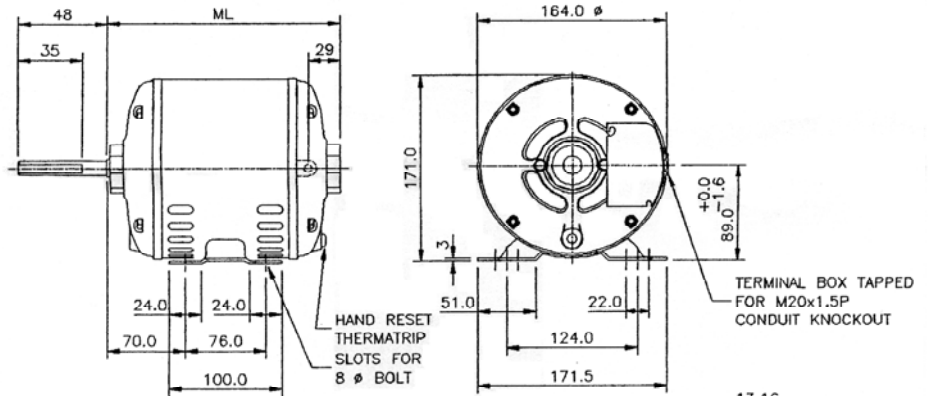
All models are complete with manual reset overload protection as standard(except for 2.2B4C).



# B56 240VOLT SINGLE PHASE MOTORS



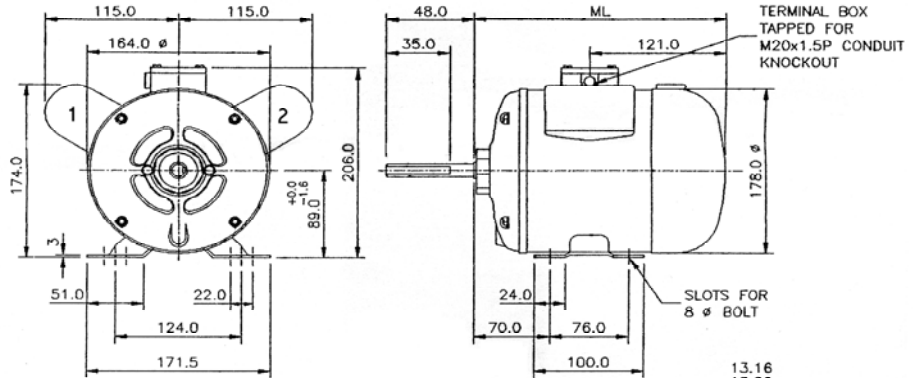
## DRIP PROOF SPLIT PHASE



### 4 POLE - 1400 RPM

KW	HP	FRAME	CODE	TYPE	FULL LOAD AMPS	ML
.25	0.33	B56	.25C4S	SS	3.00	215
.37	0.5	B56	.37C4S	SS	4.00	220
.55	0.75	B56	.55C4S	SS	5.60	230

## TOTALLY ENCLOSED CAPACITOR START



### 2 POLE - 2800 RPM

KW	HP	FRAME	CODE	TYPE	FULL LOAD AMPS	CAP START	CAP RUN	ML
*.37	0.5	B56	.37B2C	CS	3.5	100	-	245
*.55	0.75	B56	.55B2C	CS	5.2	100	-	265
*.75	1	B56	.75B2C	CS	6.6	120	-	275
1.1	1.5	B56	1.1B2C	CSCR	7	160	10	275
1.5	2	B56	1.5B2C	CSCR	8.7	160	15	290

### 4 POLE - 1400 RPM

KW	HP	FRAME	CODE	TYPE	FULL LOAD AMPS	CAP START	CAP RUN	ML
*.37	0.5	B56	.37B4C	CS	4	100	-	265
#.55	.75	B56	.55B4S	SS	5.6	-	-	275
*.55	.75	B56	.55B4C	CS	5.6	120	-	275
.75	1	B56	.75B4C	CSCR	6	120	10	275

### 6 POLE - 900 RPM

KW	HP	FRAME	CODE	TYPE	FULL LOAD AMPS	CAP START	CAP RUN	ML
0.37	0.5	B56	.37B6C	CSCR	2.6	80	10	275
0.55	0.75	B56	.55B6C	CSCR	5.2	100	20	290

All standard motors are continuously rated to comply with performance standards BS 5000 Part II. All standard Crompton Greaves single phase motors are certified to ISO 9001 standards by BVQI of England. The motors have been tested to comply with the European Union's Electro Magnetic Compatibility Directive and the Low Voltage Directive, and carry the CE mark as legally required in Australia. This range also holds C TICK as legally required in Australia. Crompton Greaves motors have been sold in Australia for over 20 years.

ALL DIMENSIONS ARE IN mm, UNLESS SPECIFIED. ALL DIMENSIONS SUBJECT TO CHANGE WITHOUT PRIOR NOTICE.  
\*MOTORS ARE FITTED WITH START CAPACITOR 1 ONLY. # MOTORS ARE FITTED WITH NO CAPACITORS.  
TYPE: CSCR-CAP START & CAP RUN / CS-CAP START / SS-SPLIT PHASE

**CE Approved**

**C TICK**

**CERTIFIED ISO 9001**



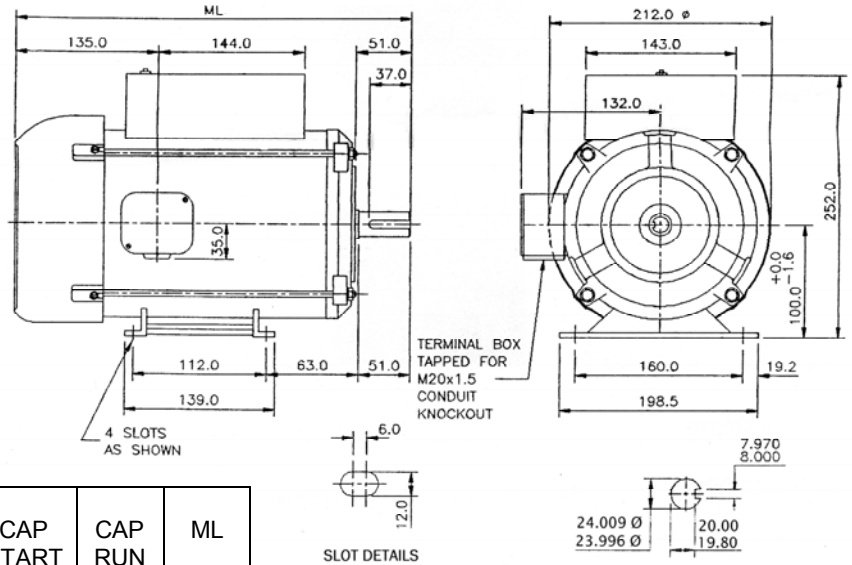
# B56 240VOLT SINGLE PHASE MOTORS



## TOTALLY ENCLOSED CAPACITOR START CAPACITOR RUN

### 4 POLE - 1400 RPM

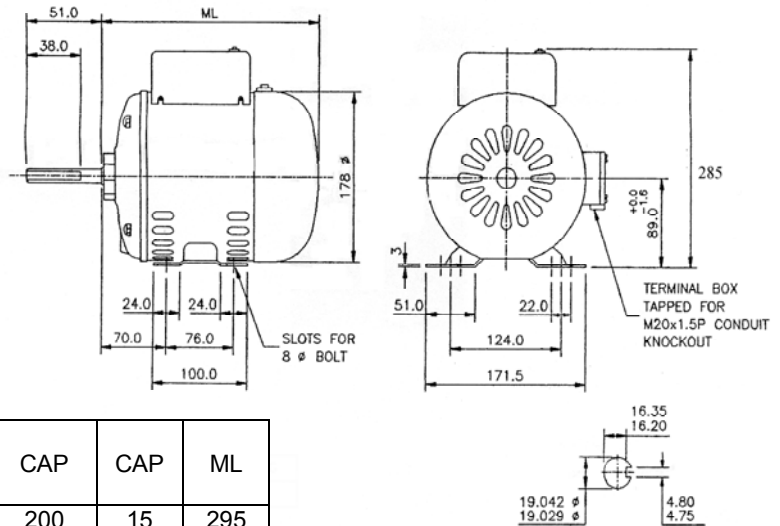
KW	HP	FRAME	CODE	TYPE	FULL LOAD AMPS	CAP START	CAP RUN	ML
1.1	1.5	B100S	1.1B4C	CSCR	8.8	200	10	350
1.5	2	B100S	1.5B4C	CSCR	9.9	200	15	370
2.2	3	B100S	2.2B4C	CSCR	13.5	280	30	385



## COMPRESSOR DUTY

### 2 POLE - 2900 RPM

KW	HP	FRAME	CODE	TYPE	FULL LOAD	CAP	CAP	ML
1.5	2	B56	1.5C2C	CSCR	9.2	200	15	295
2	2.75	B56	2C2C	CSCR	13.3	200	30	310
2.2	3	B56	2.2C2C	CSCR	15.2	280	30	320



ALSO AVAILABLE  
RESILANT MOUNT, B56 THREE PHASE,  
FLANGE MOUNT, METRIC FRAME

ALL DIMENSIONS ARE IN mm, UNLESS SPECIFIED. ALL DIMESIONS SUBJECT TO CHANGE WITHOUT PRIOR NOTICE.  
TYPE: CSCR-CAP START & CAP RUN / CS-CAP START / SS-SPLIT PHASE

**Proudly Sold and Serviced By**  
**Austech Industrial Pty Ltd**

*Unit 2 / 38 Assembly Drive, Tullamarine,  
3043, VIC. Phone: (03) 9335 3658 Fax:(03) 9335 3658*

**[WWW.AUSTECHINDUSTRIAL.COM.AU](http://WWW.AUSTECHINDUSTRIAL.COM.AU)**

*Other Products:*

*Screw Jacks*

*Gearboxes*

*Sprockets*

*Chain*

*Belts*

*Pulleys*

*Couplings*

*Variators*

*Inverters*

*Torque Limiters*

*Clutch Brakes*